



James Van Lanen Jr.
4121 Martin Lane
Two Rivers, WI 54241
August 2, 2012

Dear Friends,

Discover Eastern Wisconsin Disc Golf would like to inform you of some important upgrades and improvements under way at our local disc golf courses. Our club recently invested in two new fairways, four new champion tee areas and replacing one recreational tee area at Silver Creek Park. The next phase of this project includes adding five additional fairways to complete the new 27-hole course layout at Silver Creek. Other local projects include the City of Manitowoc adding a foot bridge at Indian Creek Park followed by adding concrete tee areas at Indian Creek, adding welcome signs and kiosks at all of our local disc golf courses, planting trees and landscaping, adding new fairways at Picnic Hill Park in Two Rivers and constructing a 4 hole fully wheel chair accessible disc golf area at Lower Cato Falls County Park. All of these volunteer-run projects have the support of local disc golfers, city/county staff and the business community. The improvements directly benefit our local park system and this support is vital to the success of these projects!

Disc Golf has continued to grow in popularity throughout the past 38 years with double digit growth in both numbers of players and courses. With that tremendous growth comes numerous challenges and opportunities. Our clubs' goal is to expose new players to our sport while satisfying the needs of existing players. Funding this expansion, we are offering businesses both tee sign and bench sponsorships, promoting our sponsors to a growing number of local and out of town players. Your five year investment of \$750 for either a tee sign or bench message will guarantee your business a place in this exciting expansion. We are also offering five year renewals of existing sponsors at just \$225 which will replace your current sponsor sign with a new message. Sponsorships are available for Silver Creek Park and Indian Creek Park in the city of Manitowoc, Picnic Hill Park in Two Rivers as well as Lower Cato Falls County Park just 6 miles West of Manitowoc.

We are extremely lucky to have several championship style courses and would like to thank our current fairway sponsors for this success. A complete list of Manitowoc County disc golf business supporters is listed on the back of this letter. As you can see, great business support has brought us to this pinnacle and now your support will allow us to fly on to even greater disc golf courses and parks in Manitowoc County.

James E. Van Lanen Jr.
Lighthouse Inn, Inc. - General Manager
Discover Eastern Wisconsin Disc Golf
Club Secretary/Treasurer



Fairway Sponsors

Silver Creek Park

Acousticfest
 Best Western Lakefront Hotel
 Cher-Make Sausage Company
 Cellcom
 The Grooming Room
 Hamann Construction
 Holy Family Memorial
 Independent Realty
 Lakefield Communications
 Lakeshore Screen Printing
 Larry's Distributing
 Lighthouse Inn
 Manitowoc Trophy
 Park Dental S.C.
 Simple Machines
 The Shack Disc Golf Gear
 TJ's Sports Bar & Grill
 United One Credit Union
 Wal-mart
 WQTC FM Radio

OUR NEWEST Sponsors

The Disc Dude
Broken Spoke Bike Studio
DEW Disc Golf
Lakeshore Disc Golf Club

Lower Cato Falls

The Caddy Bar
 DEW Disc Golf
 Drew-Lincoln HS
 Innova Discs
 Just Orthodontics
 Lighthouse Inn
 The Sheboygan DG Crew
 Shoto Screen Printing /
 Embroidery Plus
 Wisconsin Disc Sports Assoc.

Picnic Hill

Aurora Medical Center
 DEW Disc Golf
 The Disc Dude
 Hillary Wachtel
 Lighthouse Inn
 Manitowoc Trophy
 The Medicine Shoppe
 Mellon Distributing
 Dr. Paczkowski /
 Valders Building Supply
 Scott's Vending
 Two Rivers Optimists /
 Lighthouse Inn
 Unique Flying Objects
 Wisconsin Disc Sports Assoc.

Indian Creek

Acousticfest
 DEW Disc Golf
 Fitness Store / Balls and Strikes
 Hartman's Greenhouse
 La Carreta Restaurant
 Lighthouse Inn
 Piggly Wiggly Manitowoc
 The Shack Disc Golf Gear
 Subway – Mtwc & Two Rivers
 Wisconsin Disc Sports Assoc.
Associate Sponsors:
Carew Concrete & Supply
Braun Building Center
Valders Building Supply
Manitowoc Parks & Rec
Manitowoc Dept. of Public Works

2012 Tournament Sponsors

4 Seasons Lawn Care
 Aurora Health Care
 Balls and Strikes
 Bank First National
 Dr. Bero, DDS
 Branch River Golf & Tennis
 Broken Spoke Bike Studio
 Cellcom
 Concrete Works By Steve, LLC
 Cool City Spas
 The Disc Dude
 DEW Disc Golf
 Disc Golf Association

John Dorn – Graphic Arts
 Flying Fortress
 Glide Disc Golf Pro Shop
 Hartman's Greenhouse
 Tim Hildebrand
 Innova Disc Golf
 Keen Footwear
 La Carreta Restaurant
 Lakeshore Screen Printing
 Lifetime Disc Sports
 Lighthouse Inn
 Little Caesars
 Manitowoc Trophy

Maritime Insurance
 Nite-ize
 Northern Flights DG Society
 Perkins Restaurant
 Power To Act – Investments
 Shoreline Credit Union
 Shoto Screen Printing /
 Embroidery Plus
 Stone Cellar Winery
 Subway – Mtwc & Two Rivers
 The Shack Disc Golf Gear
 Unique Designs Wood Crafters
 WI-Dye Discs



Sponsor Contact Information Form

Sponsor: _____

 Attn: _____

Make Checks Payable To:
 DEW Disc Golf
 4121 Martin Lane
 Two Rivers, WI 54241

Re: Disc Golf Sponsorship

(SELECT 1 or more) Silver Creek Indian Creek Lower Cato Falls Picnic Hill

(SELECT 1 or more) Fairway Sign Bench Sign

Thank you for your interest in sign sponsorship for our local Disc Golf Courses. Your contribution will enable us to expand disc golf in Manitowoc/Two Rivers meeting the growing demand for this fun and exciting sport.

For your contribution of \$750.00 new or \$225 renewal, (Paid Date: _____ check #: _____) you will receive your sponsor message on one tee sign or bench, local newspaper and radio recognition, and mentions at all disc golf events at all Manitowoc/Two Rivers courses.

If using this form as a record of your payment, note that Discover Eastern Wisconsin Disc Golf will confirm your sponsorship upon receipt of payment. Please send a copy of this form with your check.

For more Information contact:

Discover Eastern Wisconsin Disc Golf
 Attn: Jim Van Lanen Jr.
 4121 Martin Lane
 Two Rivers, WI 54241
discgolf@discoverwisc.com
 920-629-9997

OR Manitowoc Parks Department
 Attn: Kevin Glaeser
 2655 South 35th Street
 Manitowoc, WI 54220
kglaeser@manitowoc.org
 920-686-6550

Sincerely,

Jim Van Lanen Jr.
 Secretary/Treasurer – DEW Disc Golf
discgolf@discoverwisc.com

P
A
R
3



147' - 205'

Champion Tee +25'



BankFirst

NATIONAL

For Better Banking, Think First



Many thanks to the County Parks Dept. for installing and maintaining this course. Please help keep it clean :)

Local Courses:	Lower Cato Falls County Park 6 miles West of I43 on Hwy JJ Cato	Silver Creek Park 1/4 mile South of 10th & Viebahn St Manitowoc	Indian Creek Park N 8th Street & Albert Drive Manitowoc	Picnic Hill Park 22th Street & Polk Street Two Rivers
-----------------------	--	--	--	--



BREATHTAKING LAKE MICHIGAN VIEWS
HOTEL - RESTAURANT - BAR AND BANQUET
 LHINN.COM 800-228-6416 TWO RIVERS, WI

LIGHTHOUSE INN



Layout
09/29/2012

● =
Alt Baskets
□ =
Champ Tees

CHAMP TEES		
2	----	230
13	----	376
17	----	272
26	----	370

Alternate Baskets		
	Short	Long
1	170	210
2	----	----
3	----	----
4	----	----
5	----	----
6L	181	353
6XL	231	403
7	256	331
8	----	----
9	309	398
Total	1810	2567
10	400	525
11	----	----
12	----	----
13	----	----
14	----	----
15	----	----
16	----	----
17	----	----
18	205	235
Total	2132	2861
19	----	----
20	206	248
21	235	305
22	----	----
23	----	----
24	318	428
25	----	----
26	293	362
27	227	295
Total	2237	2961

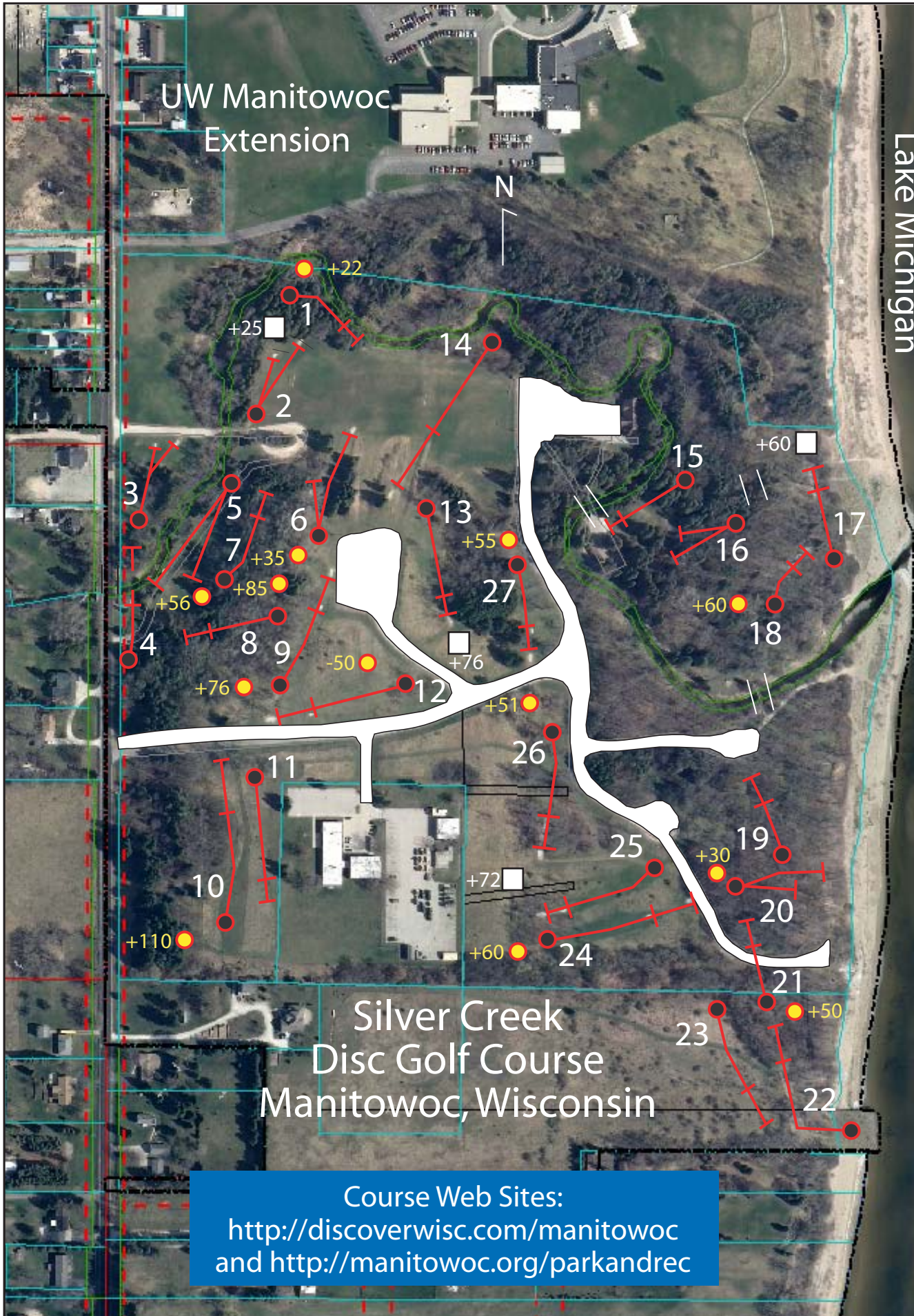
Original Baskets		
	Short	Long
1	148	188
2	147	205
3	200	228
4	142	244
5	205	308
6	146	318
7	200	275
8	150	240
9	233	322
Total	1571	2328
10	290	415
11	270	324
12	248	351
13	245	310
14	288	478
15	192	248
16	130	178
17	154	212
18	145	175
Total	1962	2691
19	160	245
20	171	213
21	185	255
22	335	450
23	225	330
24	258	368
25	238	298
26	242	311
27	172	240
Total	1986	2710

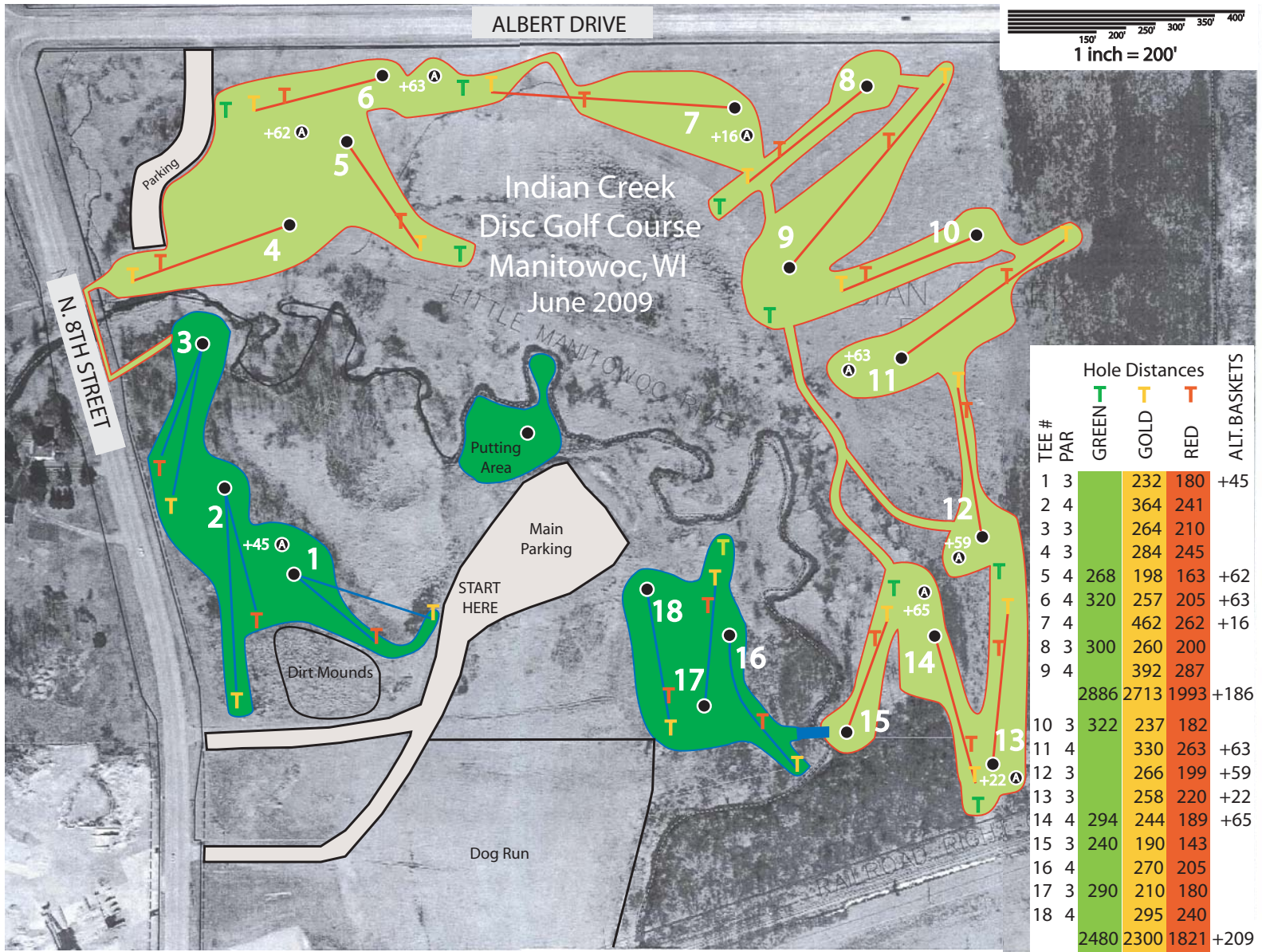
Lake Michigan

UW Manitowoc
Extension

Silver Creek
Disc Golf Course
Manitowoc, Wisconsin

Course Web Sites:
<http://discoverwisc.com/manitowoc>
and <http://manitowoc.org/parkandrec>





TEE #	PAR	Hole Distances			ALT. BASKETS
		GREEN T	GOLD T	RED T	
1	3		232	180	+45
2	4		364	241	
3	3		264	210	
4	3		284	245	
5	4	268	198	163	+62
6	4	320	257	205	+63
7	4		462	262	+16
8	3	300	260	200	
9	4		392	287	
		2886	2713	1993	+186
10	3	322	237	182	
11	4		330	263	+63
12	3		266	199	+59
13	3		258	220	+22
14	4	294	244	189	+65
15	3	240	190	143	
16	4		270	205	
17	3	290	210	180	
18	4		295	240	
		2480	2300	1821	+209

Picnic Hill Disc Golf Course Two Rivers, WI New Fairways Proposed April 2012

Legend

- = Road
- = Property Line
- = Fairways
- = New Fairways
- = Vita Course
- = New Path
- = Old Path
- = Basket
- = Amateur Tee
- = Pro Tee

Hole	Short	Long
1	183	235
1a	193	230
1b	169	215
1c	211	263
2	219	266
3	180	230
4	128	222
5	170	237
6	126	150
7	138	210
8	219	288
9	186	228
Total	2122	2774

